

BNSSG Community Services

Sirona care & health
February 2020



A Reminder



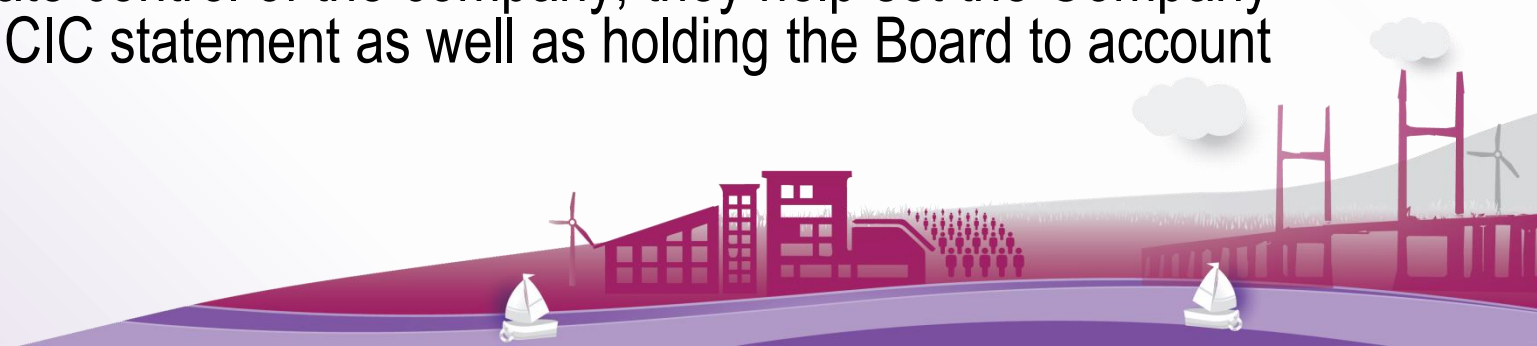
- Sirona has been awarded the contract to provide adult community healthcare services across Bristol, North Somerset and South Gloucestershire from April 2020
- The contract we have been awarded is for 10 years and worth over £100m per year
- We are already providing these services in South Gloucestershire – services in Bristol are currently provided by Bristol Community Health CIC and in North Somerset by North Somerset Community Partnership
- We have also been awarded a number of additional contracts mainly in relation to children's services



Who are we?



- Sirona care & health CIC is an independent company registered with Companies House, and limited by guarantee. We started up in October 2011.
- All of our income comes from the public purse – from contracts with the NHS or Local Authorities – and we see ourselves as public servants
- We have set out in our Community Interest Statement how we will add value to the local community. All our resources will be used for this purpose and any surplus reinvested back into the business
- We have a Board of Directors comprising Non Executive Directors and Executive Directors who manage the company day to day
- We have 26 Members who have ultimate control of the company; they help set the Company Strategy and ensure we deliver to our CIC statement as well as holding the Board to account



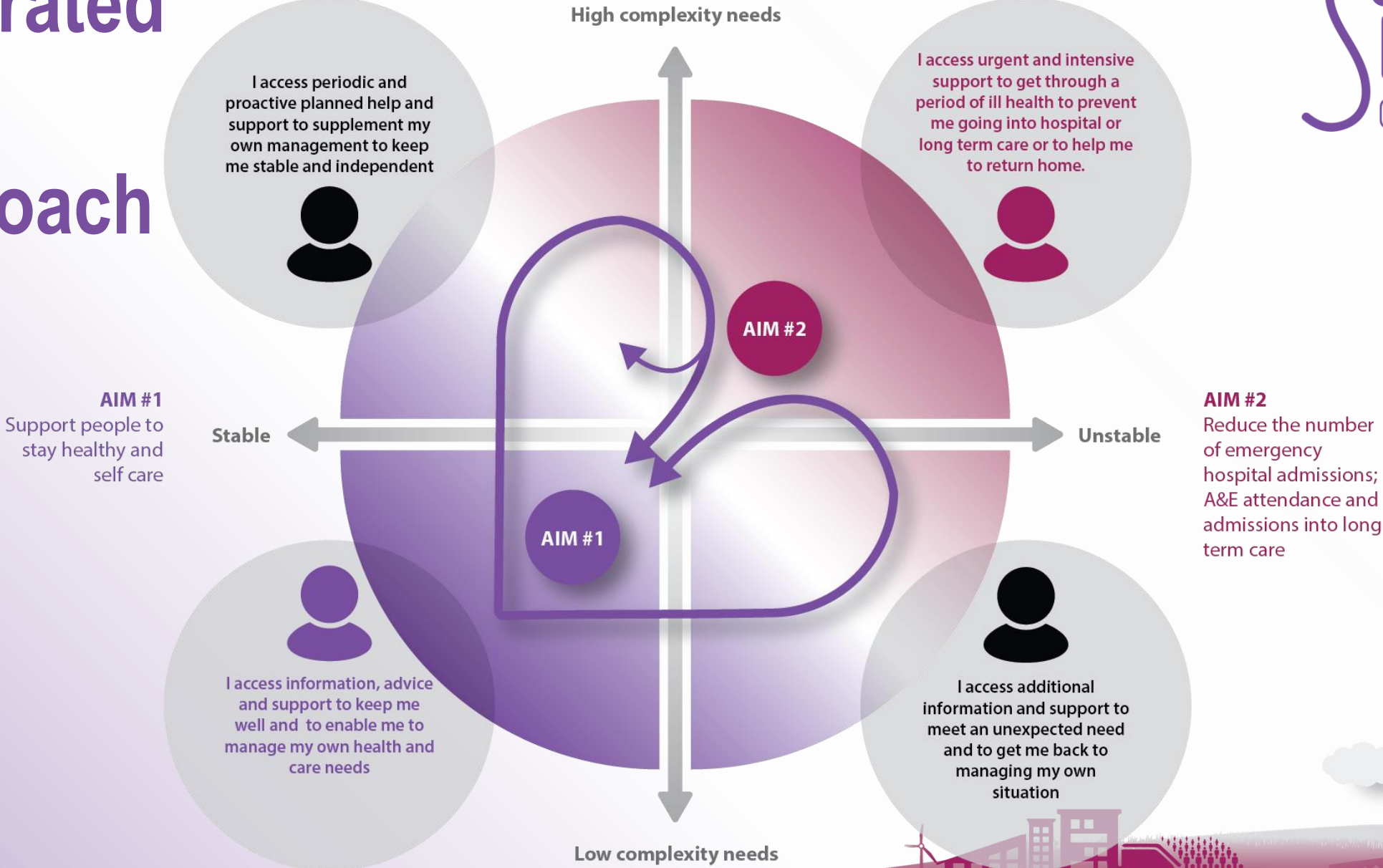


Sirona
care & health

- **Strength**
- **Trust**
- **Courage**
- **Common Sense**

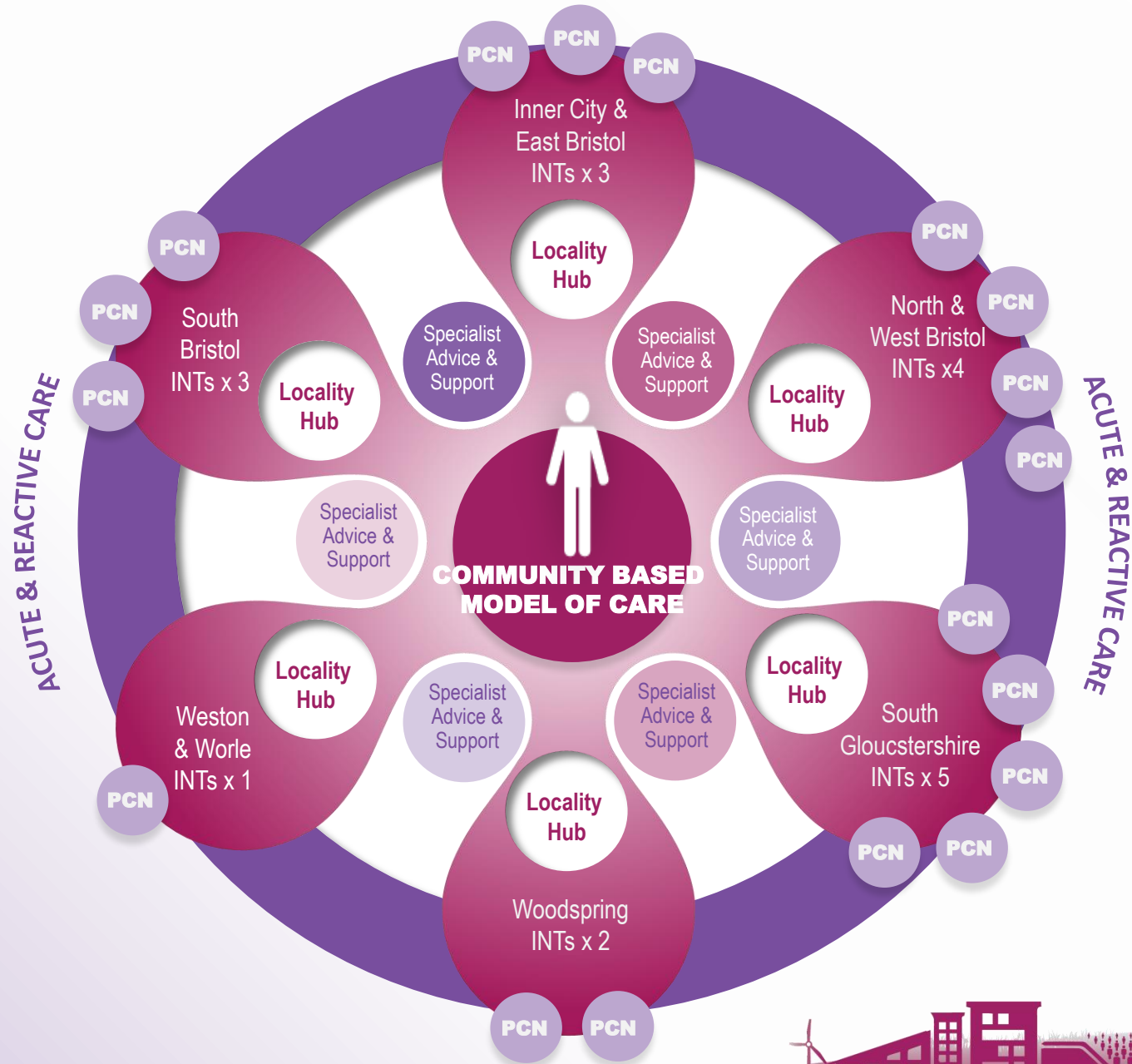


Integrated Care Approach



Community Based Model of Care

- Primary Care Networks (PCNs)
- Locality Hubs
- Integrated Network Teams (INTs)
- Acute and Reactive Care
- Specialist advice and support



Additional Contracts

- Children's Services – Bristol (from BCH)
 - Public Health Nursing; Therapies
- **Children's Services – North Somerset**
 - Public Health Nursing; Therapies (from NSCP)
 - Paediatrics and associated specialist nursing and therapies (from Weston)
- **Partner2Care – hosted by NSCP**
 - Brokerage service for personal health budgets – adults and children (from NSCP)
- **Children's Immunisations across BNSSG (from NSCP)**



What does this mean?



- From 1 April we will be the single provider of adult and children's community healthcare services across BNSSG
- The contracts have a total value of circa £155 m
- Total Staffing will be around 3250
- Our portfolio will be approximately two thirds Adults and one third Children's



Increased role for Third Sector

- Spend a minimum of 3% of budget in the Third Sector
- Need to ensure that spend targets priorities of each locality and adds value to the system
- Building Healthier Communities
- Open and transparent processes – will take time to deliver



Where are we?

- Mobilisation Resources in place and Workstreams established
 - People seconded from NSCP; BCH and Sirona as Programme/Project Managers
 - Using some external help in key areas e.g. Digital; Estates
 - Cross membership of all workstreams from 3 current incumbents
- Building a resilient Infrastructure
- Significant Staff Engagement – Appreciative Inquiry
- Maintaining Business as Usual at all levels



Key Updates (1)

➤ Executive Team appointed:

- Chief Executive Janet Rowse
- Director of Nursing Mary Lewis
- Director of Operations Jenny Theed
- Medical Director Kate Rush
- Director of HR Sarah Margetts
- Director of Therapies and AHPs Mike Richards
- Director of Transformation Julie Sharma
- Director of Finance Clive Bassett



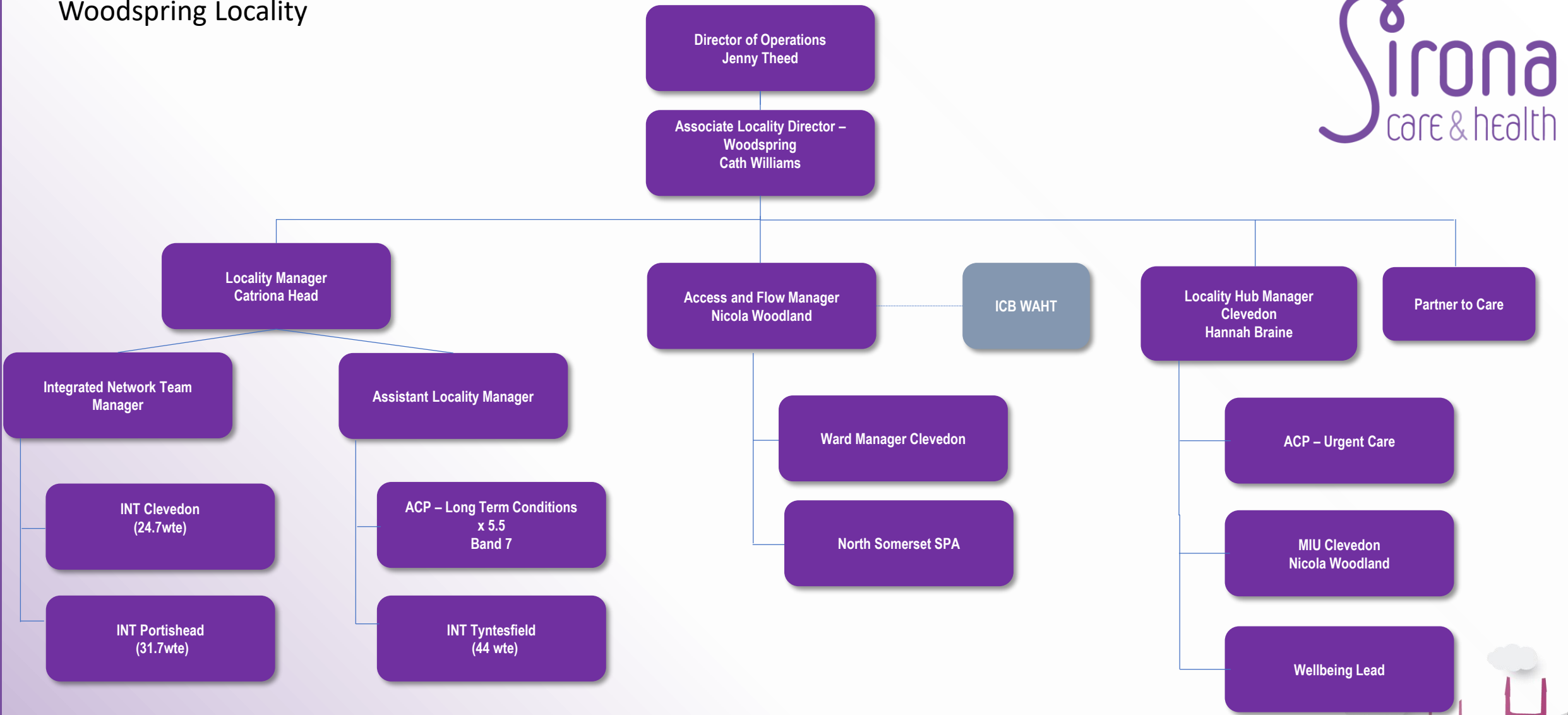
Key Updates (2)



Operational Management Structure being implemented



Woodspring Locality

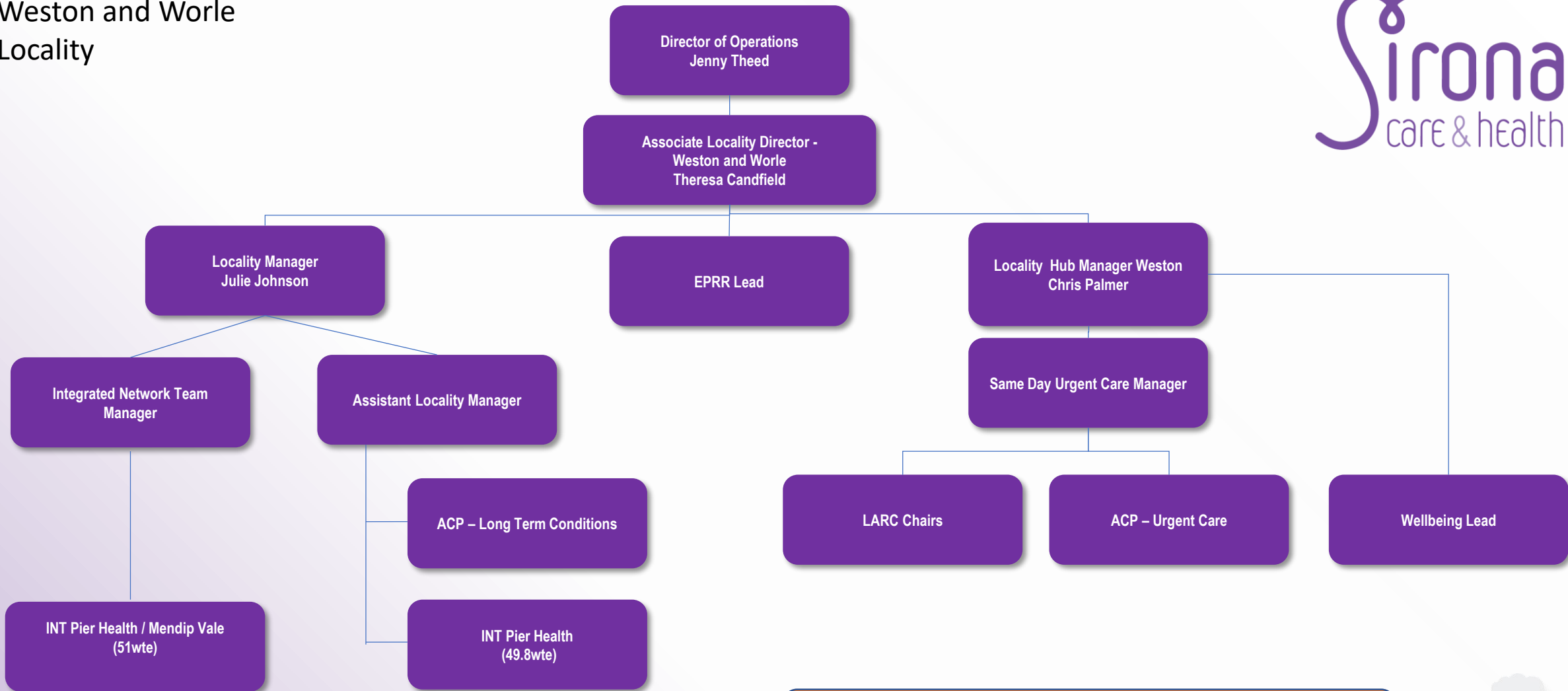


Approx number of staff - 170 wte
 Management resource : staff ratio 1:28
 INT managers 2 : 100 wte

Strategic lead role
 Weston Liasion



Weston and Worle Locality



Approx. number of staff 128 wte
Management resource : staff ratio 1:21
INT managers 2:101 wte

Strategic lead role
EPRR



Commitments to Improvement

- Building on Strengths
 - Individual
 - Communities
 - Existing Services and Providers
- Simplifying
 - No wrong door
 - Care Navigators
 - Care Co-ordination for those with complex needs
- Consistency and Fairness
 - Targeting Resources/Level Up
 - Consistency of approach
 - Local Autonomy
- New Ways of Working
- Strong use of Digital
- Community Outcomes Framework



Summary

- Joining up and building resilience across the system – especially primary and community services
- Strengths Based; Focus on Prevention & Early Intervention; Promoting Independence
- As much local autonomy as possible within constraints of organisational imperatives; performance measures; best use of resources; safe and effective care
- New ways of working
 - For Providers and Commissioners
 - Primary Care Networks/Integrated Care Partnerships
- We don't have all the answers – need to work together to learn; flex; respond; experiment
- Contract doesn't start until April 2020 – Priority is SAFE TRANSFER

